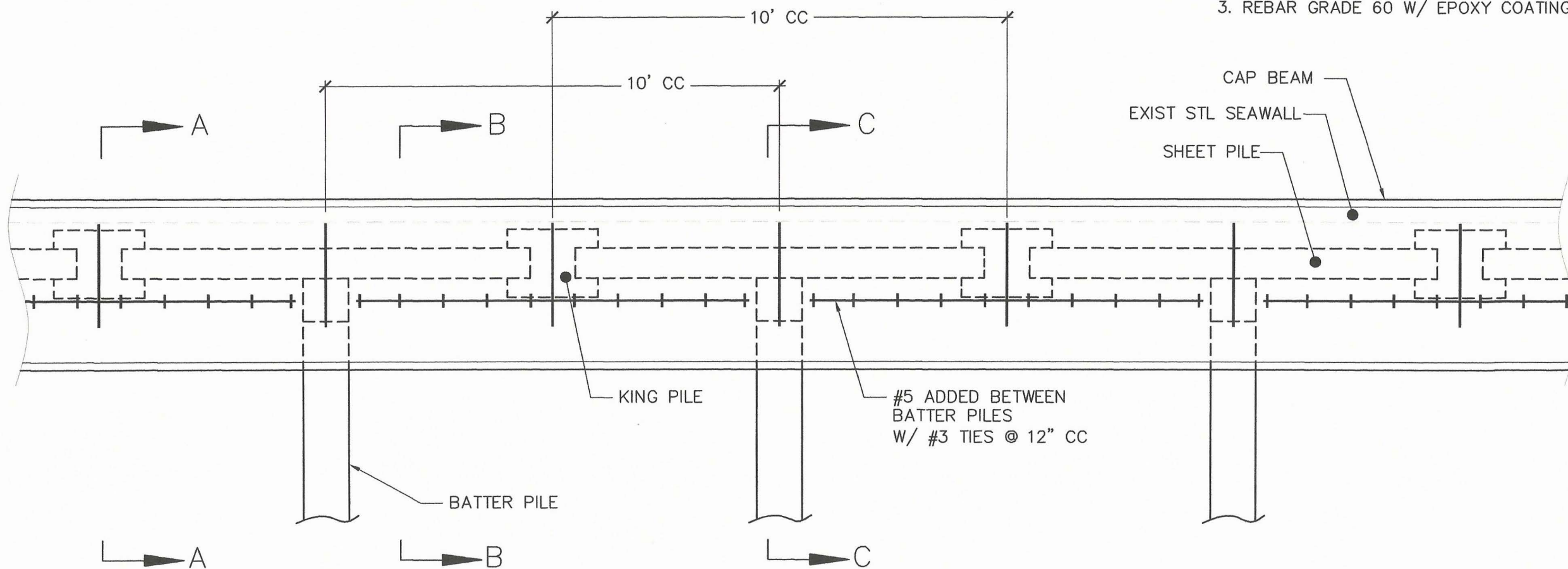


COMPONENT LIST

1. 18" x 24" H-PILES PRESTRESSED DRIVEN TO A MINIMUM DEPTH OF 6 FEET BELOW SOIL GRADE ON THE WATER SIDE AND A 25 TON BEARING CAPACITY
2. 8" PANELS PRESTRESSED DRIVEN TO A MINIMUM DEPTH OF 2 FEET BELOW SOIL GRADE ON THE WATER SIDE AND A 25 TON BEARING CAPACITY IF NOT SUPPORTED BY H-PILES
3. 12" SQ PRESTRESSED CONCRETE BATTER PILES DRIVEN TO A MINIMUM DEPTH OF 6 FEET BELOW SOIL GRADE ON THE WATER SIDE AND A 25 TON BEARING CAPACITY, LEAVE MIN. 18" STRANDS EXPOSED IN NEW CAP POUR

NOTES:

1. PRECAST CONCRETE TO BE 5000 PSI
2. CAST CONCRETE TO BE 4000 PSI
3. REBAR GRADE 60 W/ EPOXY COATING (GREEN BAR)



PARTIAL PLAN

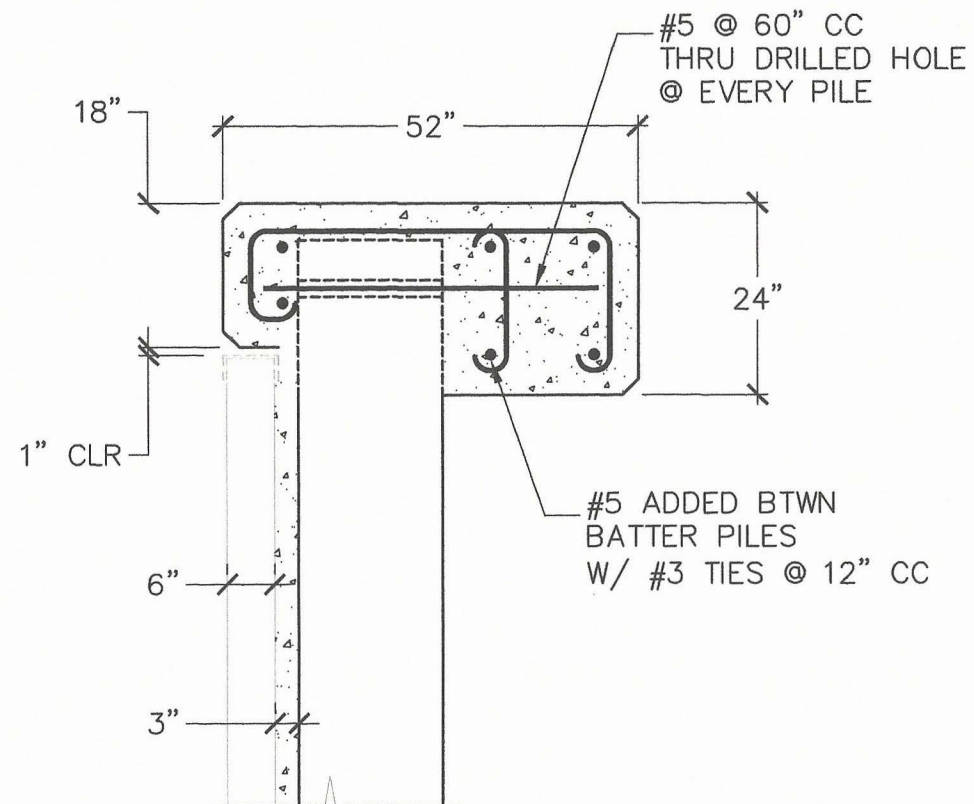


NEW NORTH SEAWALL
 ANCHORAGE PARK, VILLAGE OF NORTH PALM BEACH
 501 US HWY 1
 NORTH PALM BEACH, FLORIDA

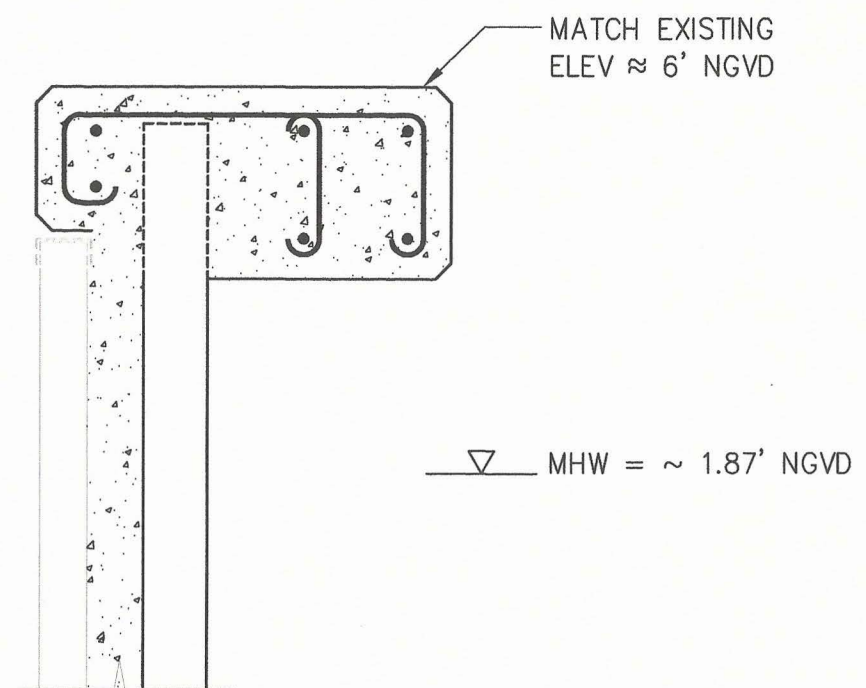
CHALAIRE AND ASSOCIATES, INC.
 ENGINEERING CONSULTANTS
 EB# 6834
 DON CHALAIRE, PE #33089
 TERRI CHALAIRE, PE #65587
 JEFFREY WHITAKER, PE #76147
 721 US HIGHWAY #1, SUITE 212
 NORTH PALM BEACH, FL 33408
 PHONE (561) 848-7055 FAX (561) 848-7057

REVISIONS	DATE	BY	CHK

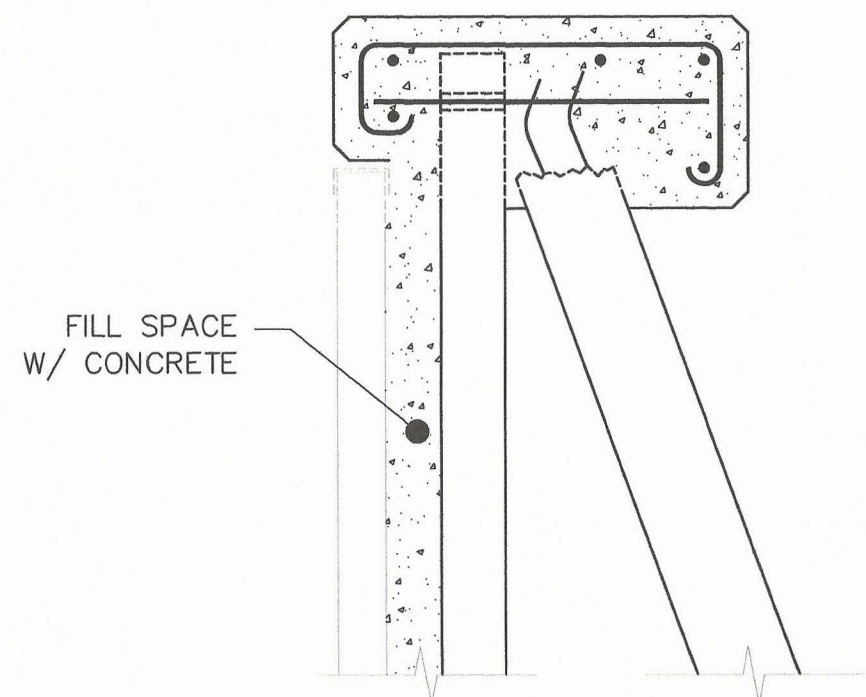
SCALE: 1/4" = 1'-0"
 SHEET: S-1
 1 OF 3 SHEETS



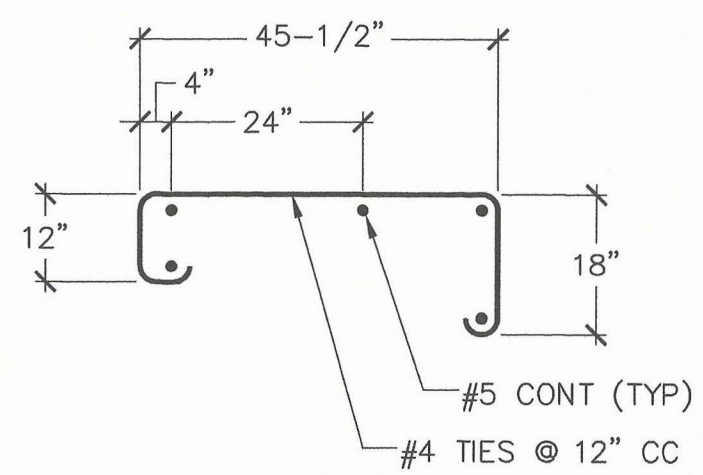
SECTION A



SECTION B



SECTION C



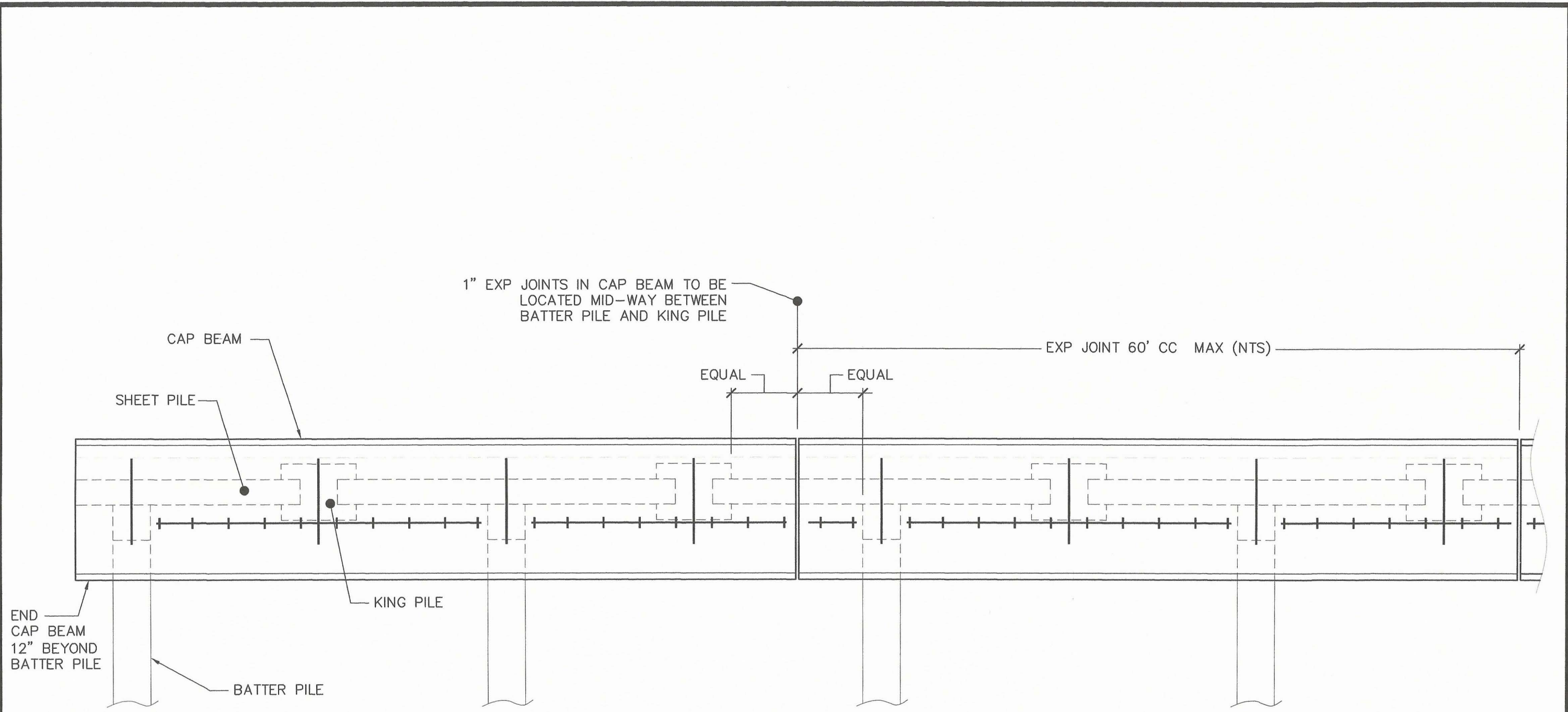
REBAR CAGE DETAIL

PROFESSIONAL ENGINEER
DONALD KEVIN CHALAIRE
LICENSE
No. 33089
STATE OF FLORIDA
1-16-17

REVISIONS	DATE	BY	SCALE

SHEET
S-2
2 OF 3 SHEETS

<p>NEW NORTH SEAWALL ANCHORAGE PARK, VILLAGE OF NORTH PALM BEACH 501 US HWY 1 NORTH PALM BEACH, FLORIDA</p>	<p>CHALAIRE AND ASSOCIATES, INC. ENGINEERING CONSULTANTS EB# 6834 DON CHALAIRE, PE #33089 TERRI CHALAIRE, PE #65587 JEFFREY WHITAKER, PE #76147 721 US HIGHWAY #1, SUITE 212 NORTH PALM BEACH, FL 33408 PHONE (561) 848-7055 FAX (561) 848-7057</p>
---	---



1" EXP JOINTS IN CAP BEAM TO BE LOCATED MID-WAY BETWEEN BATTER PILE AND KING PILE

EXP JOINT 60' CC MAX (NTS)

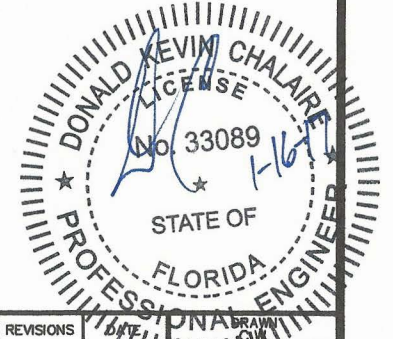
EQUAL EQUAL

END CAP BEAM 12" BEYOND BATTER PILE

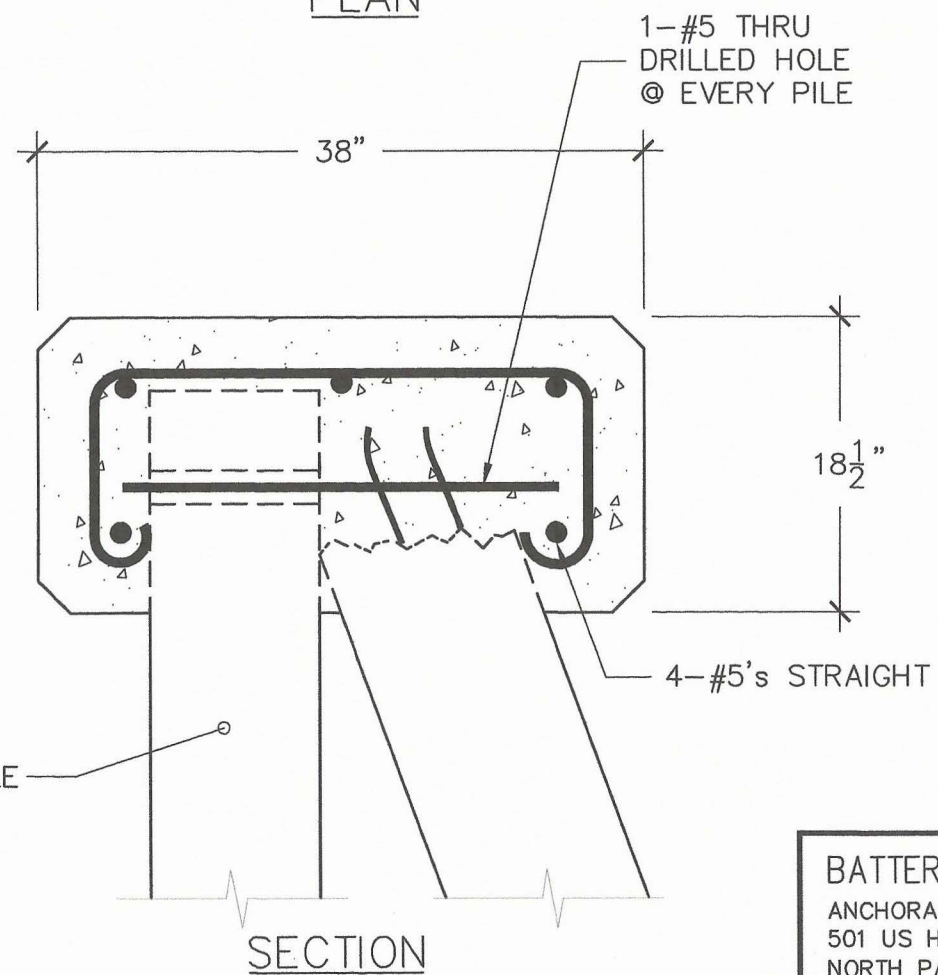
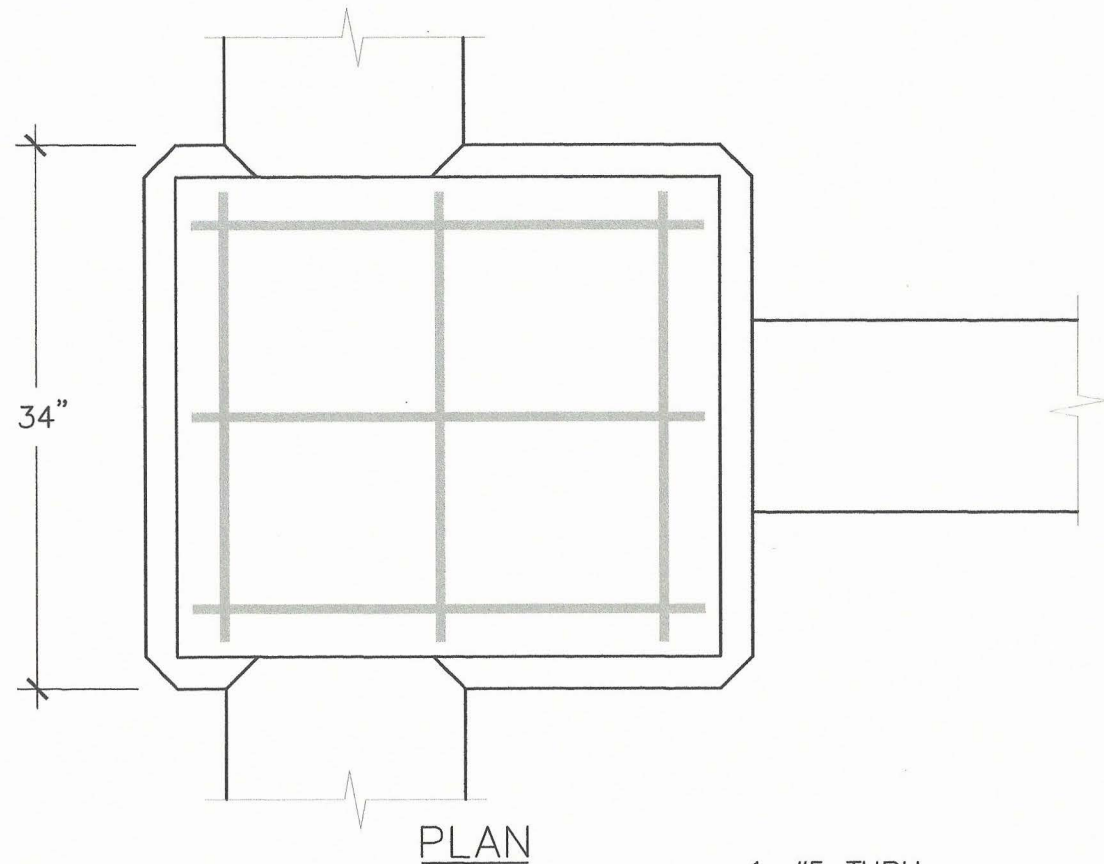
BATTER PILE

KING PILE

EXPANSION JOINT DETAIL



NEW NORTH SEAWALL ANCHORAGE PARK, VILLAGE OF NORTH PALM BEACH 501 US HWY 1 NORTH PALM BEACH, FLORIDA	CHALAIRE AND ASSOCIATES, INC. ENGINEERING CONSULTANTS EB# 6834 DON CHALAIRE, PE #33089 TERRI CHALAIRE, PE #65587 JEFFREY WHITAKER, PE #76147 721 US HIGHWAY #1, SUITE 212 NORTH PALM BEACH, FL 33408 PHONE (561) 848-7055 FAX (561) 848-7057	REVISIONS	DATE	DRAWN
			DATE	SCALE
			05/05/16	1/4" = 1'-0"
				SHEET
				S-3
				3 OF 3 SHEETS

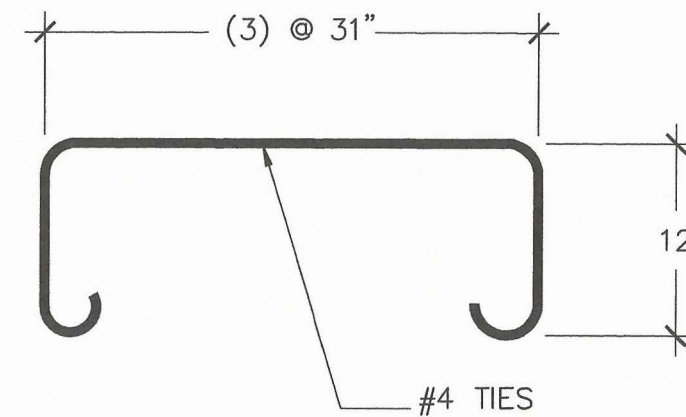
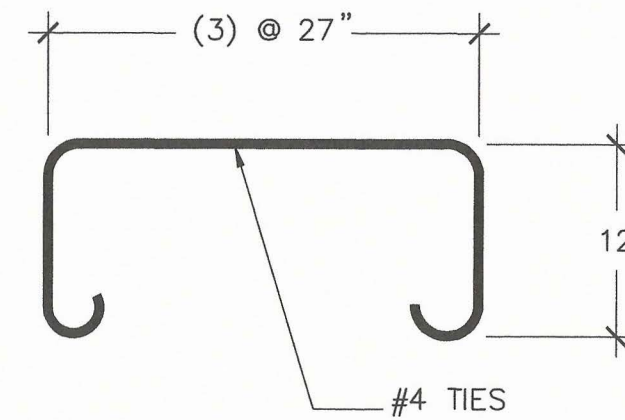


COMPONENT LIST

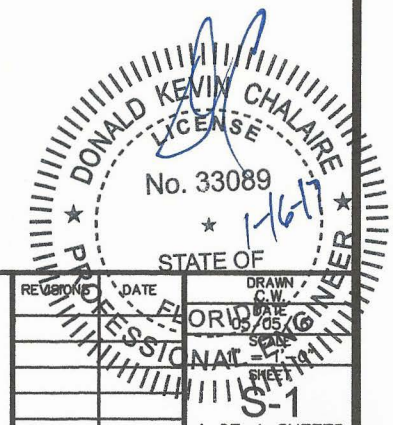
1. 12" SQ PRESTRESSED CONCRETE BATTER PILES DRIVEN TO A MINIMUM DEPTH OF 6 FEET BELOW SOIL GRADE ON THE WATER SIDE AND A 25 TON BEARING CAPACITY, LEAVE MIN. 18" STRANDS EXPOSED IN NEW CAP POUR

NOTES:

1. PRECAST CONCRETE TO BE 5000 PSI
2. CAST CONCRETE TO BE 4000 PSI
3. REBAR GRADE 60 W/ EPOXY COATING (GREEN BAR)



REBAR BOX DETAIL

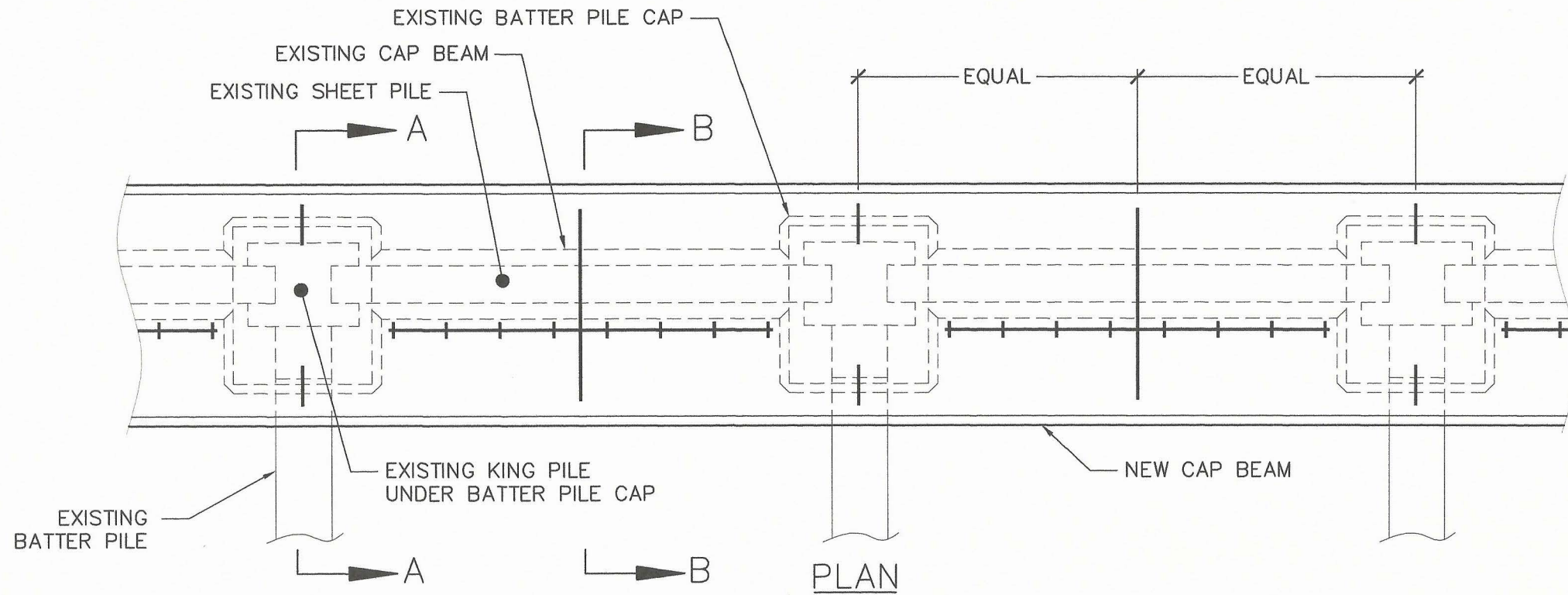


BATTER PILE ADDITION TO EXISTING SEAWALL NEAR BOAT RAMP
 ANCHORAGE PARK, VILLAGE OF NORTH PALM BEACH
 501 US HWY 1
 NORTH PALM BEACH, FLORIDA

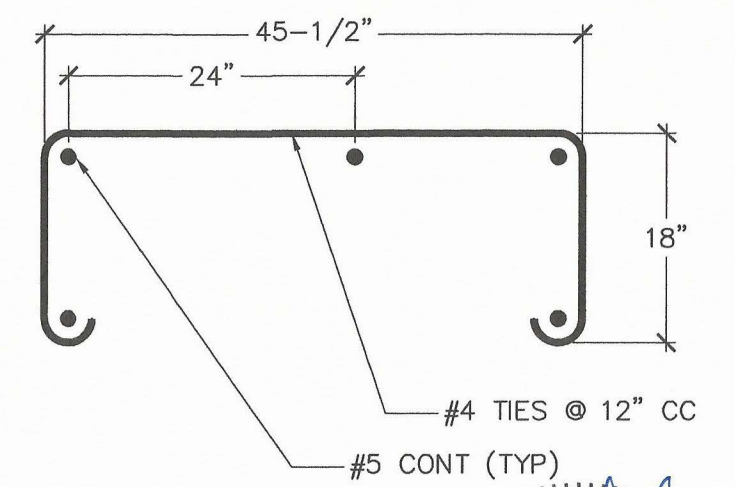
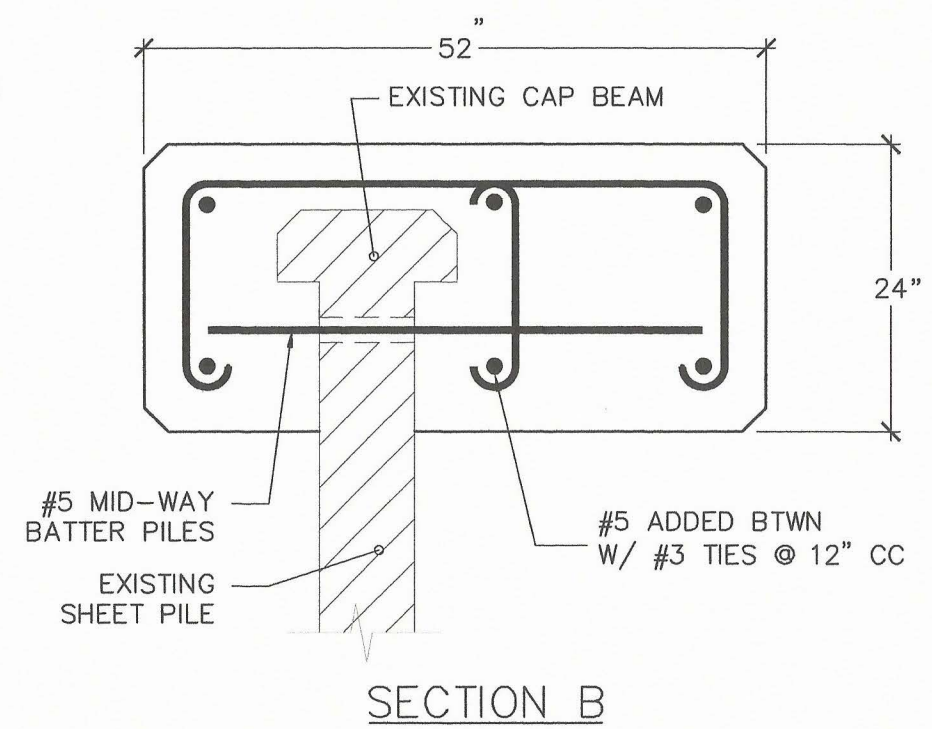
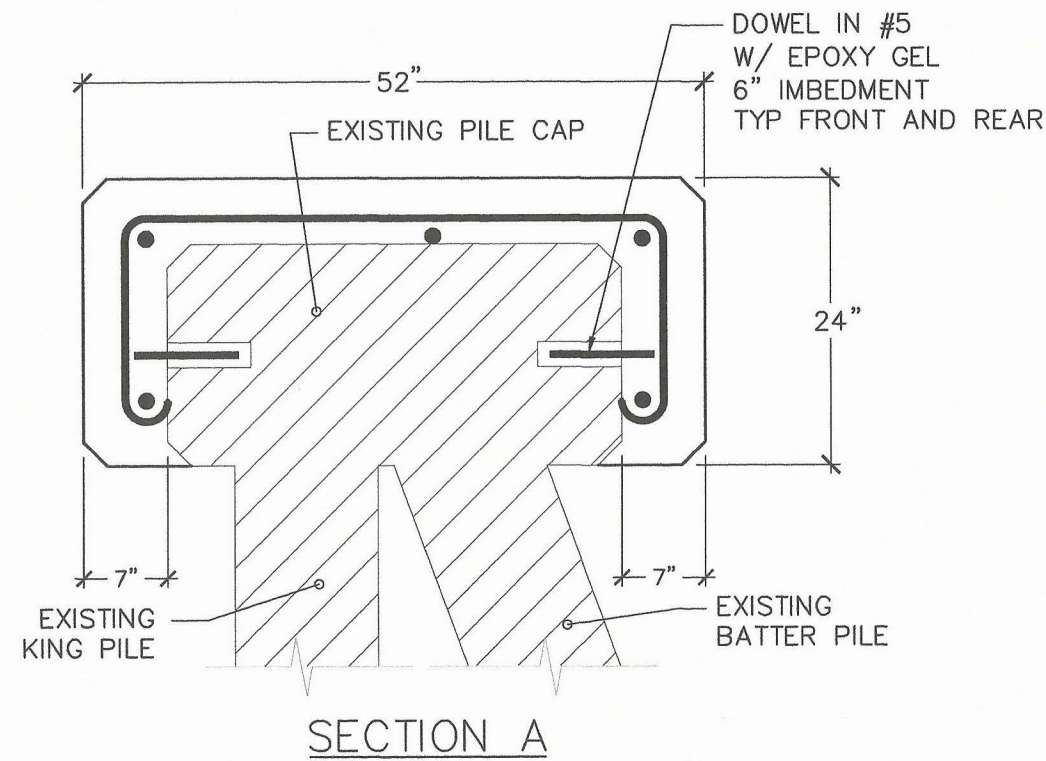
CHALAIRE AND ASSOCIATES, INC.
 ENGINEERING CONSULTANTS
 EB# 6834
 DON CHALAIRE, PE #33089
 TERRI CHALAIRE, PE #65587
 JEFFREY WHITAKER, PE #76147
 721 US HIGHWAY #1, SUITE 212
 NORTH PALM BEACH, FL 33408
 PHONE (561) 848-7055 FAX (561) 848-7057

REVISION	DATE	DRAWN	CHECKED

1 OF 1 SHEETS



NOTES:
 1. CAST CONCRETE TO BE 4000 PSI
 2. REBAR GRADE 60 W/ EPOXY COATING (GREEN BAR)

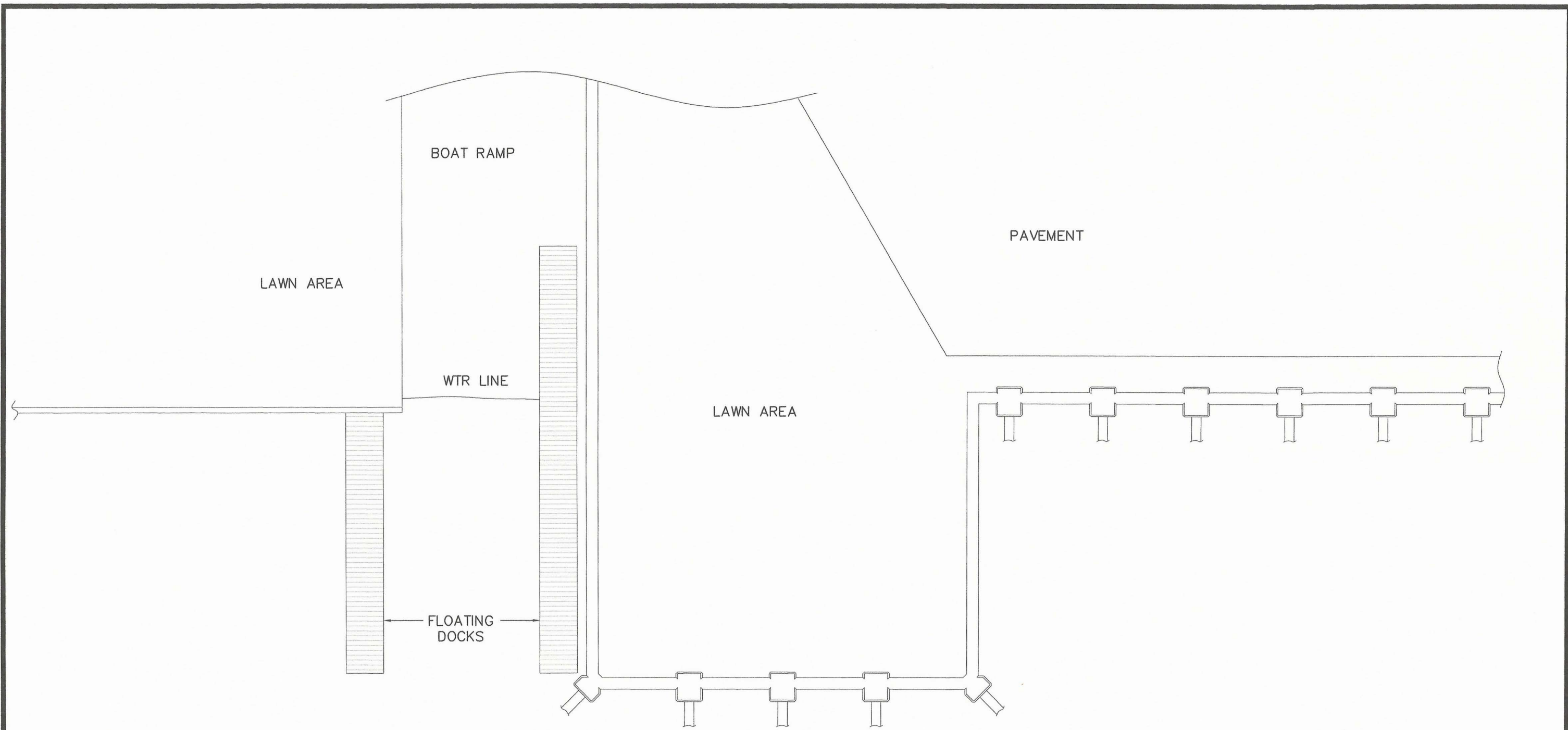


PROFESSIONAL ENGINEER
 DONALD KEVIN CHALAIRE
 LICENSE No. 33089
 STATE OF FLORIDA

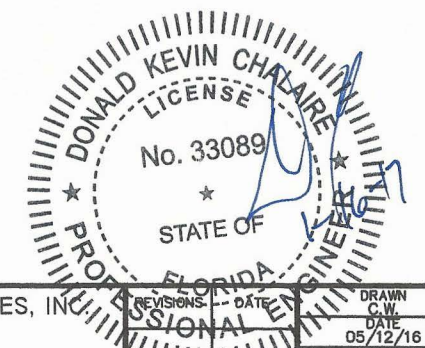
NEW CAP BEAM OVER EXISTING SOUTH SEAWALL
 ANCHORAGE PARK, VILLAGE OF NORTH PALM BEACH
 501 US HWY 1
 NORTH PALM BEACH, FLORIDA

CHALAIRE AND ASSOCIATES, INC.
 ENGINEERING CONSULTANTS
 EB# 6834
 DON CHALAIRE, PE #33089
 TERRI CHALAIRE, PE #65587
 JEFFREY WHITAKER, PE #76147
 721 US HIGHWAY #1, SUITE 212
 NORTH PALM BEACH, FL 33408
 PHONE (561) 848-7055 FAX (561) 848-7057

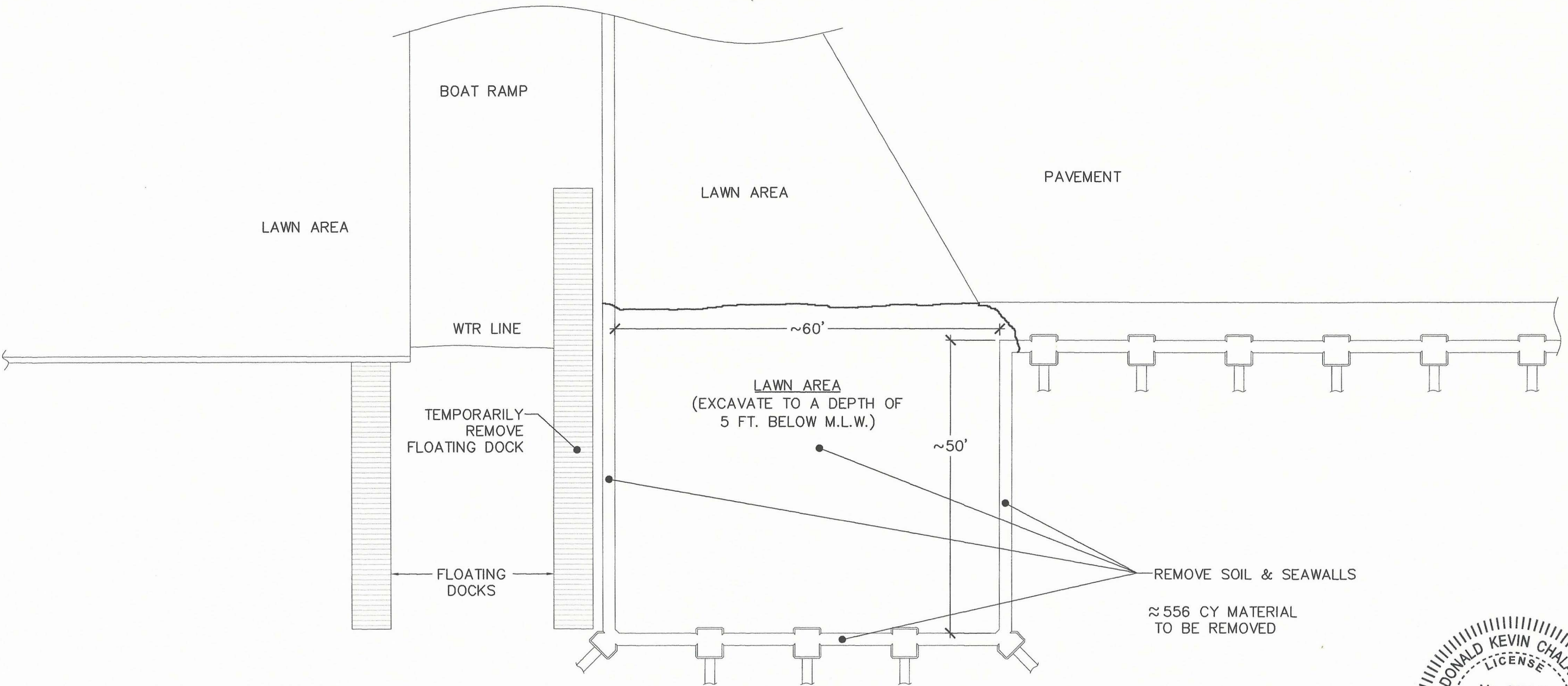
REVISIONS
 DATE
 DRAWN BY
 CHECKED BY
 SCALE
 SHEET
 S-1
 1 OF 1 SHEETS



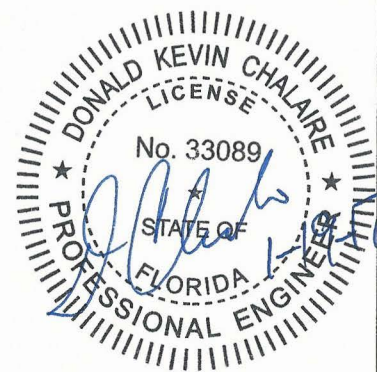
EXISTING PLAN



RENOVATION OF RECTANGULAR AREA ANCHORAGE PARK, VILLAGE OF NORTH PALM BEACH 501 US HWY 1 NORTH PALM BEACH, FLORIDA	CHALAIRE AND ASSOCIATES, INC. ENGINEERING CONSULTANTS EB# 6834 DON CHALAIRE, PE #33089 TERRI CHALAIRE, PE #65587 JEFFREY WHITAKER, PE #76147 721 US HIGHWAY #1, SUITE 212 NORTH PALM BEACH, FL 33408 PHONE (561) 848-7055 FAX (561) 848-7057	REVISIONS DATE	DRAWN C.W. DATE 05/12/16 SCALE 3/32" = 1'-0" SHEET S-1 1 OF 3 SHEETS
		PROFESSIONAL ENGINEER STATE OF FLORIDA	DATE 05/12/16



DEMOLITION PLAN



RENOVATION OF RECTANGULAR AREA
 ANCHORAGE PARK, VILLAGE OF NORTH PALM BEACH
 501 US HWY 1
 NORTH PALM BEACH, FLORIDA

CHALAIRE AND ASSOCIATES, INC.
 ENGINEERING CONSULTANTS
 EB# 6834
 DON CHALAIRE, PE #33089
 TERRI CHALAIRE, PE #65587
 JEFFREY WHITAKER, PE #76147
 721 US HIGHWAY #1, SUITE 212
 NORTH PALM BEACH, FL 33408
 PHONE (561) 848-7055 FAX (561) 848-7057

REVISIONS	DATE	DRAWN C.W.
		05/12/16
		SCALE 3/32" = 1'-0"
		SHEET S-2
		2 OF 3 SHEETS

